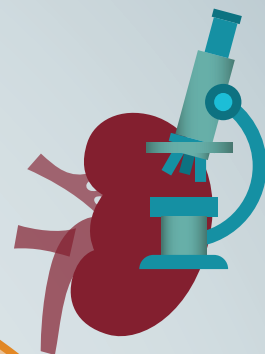


# “NEPHROTIC WHAT?!” ...

*Understanding Primary Nephrotic Syndrome*

**TIP:** Don't be intimidated by the disease names; they are just *descriptions* of how the kidney tissue looks under a microscope.



## Nephrotic Syndrome (NS)

is not a disease, but an umbrella term for the collection of signs and symptoms that occur when the kidney filters (glomeruli) leak protein into the urine.

### Common symptoms of NS include:

Foamy urine (Proteinuria)    Swelling (Edema)    Increased blood pressure (Hypertension)  
High cholesterol (Hypercholesterolemia)    Low blood protein (Hypoproteinemia)

### Why has my doctor recommended a kidney biopsy?

*To determine the **cause** of NS to guide treatment*

#### Focal Segmental Glomerulosclerosis (FSGS)

*Some sections of kidney filters show scarring.*

#### Minimal Change Disease

*Kidney tissue shows very little change from normal kidney tissue.*

#### Membranous Nephropathy

*Kidney tissue has a thicker than normal filtering barrier.*



### Why participate in NEPTUNE?

*To **improve** our understanding of these diseases and develop **better** treatments*

### Why does NEPTUNE need additional kidney tissue?

*To have the best chance to find the **right treatments** for everyone*